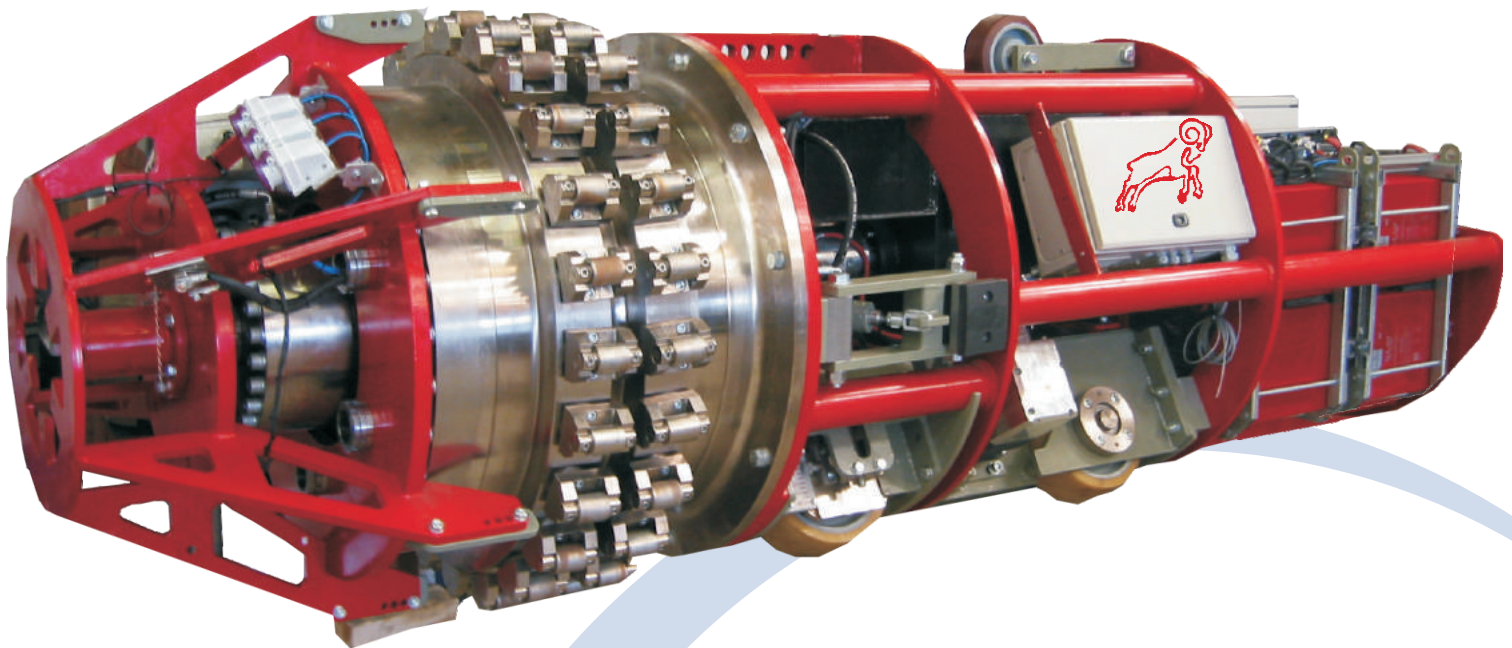


## Specification of the RedRamClamp™



**RED RAM**

- Clamping force 800ton (2x400ton)
- Remote control (all Functions)
- Pipe range 36"-42" / 48"-56"
- Hydraulic gap adjustment
- 48V battery pack for 12 working hours
- Self propelled and parking brake
- Self aligning expander shoes
- Copper shoes for automatic welding



The RedRamClamp™ is a revolutionary internal line up clamp, which is specially designed for large bore diameter pipes. It has excellent capacities for heavy and small wall thickness for off- and onshore applications. With its massive frame and excellent material treatment The RedRamClamp™ can withstand major forces! The clamping force is hydraulic and adjustable up to 400 tons for each expander row, which allows a precise alignment. It eliminates any miss match and forces oval pipes back to round. The gap between the two pipes is adjustable by a hydraulic cilinder up to 6mm. Leakage of hydraulic oil is impossible because of an anti-leakage system. The RedRamClamp™ can be expanded with a copper shoes module.



Self aligning expander shoes



All functions remote controlled



Copper shoes for automatic welding

## INTERNAL HYDRAULIC LINE-UP CLAMP WITH REMOTE CONTROL

★ Improved Safety ★ Better Quality ★ Higher productivity

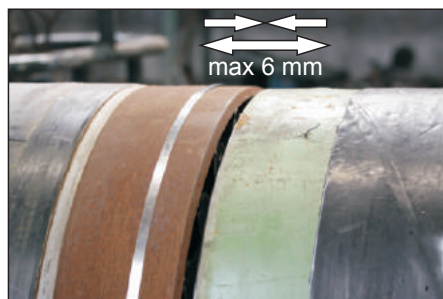
### MODEL IHLC

#### TECHNICAL SPECIFICATION

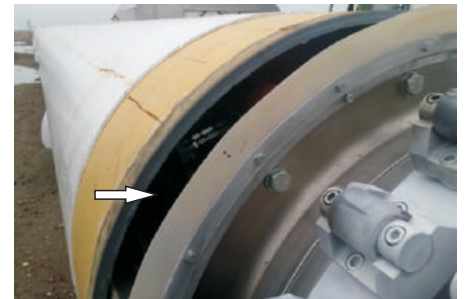
<b>Description</b>	HERCULES internal hydraulic clamp performance
<b>Range</b>	36" - 42" / 48" - 56"
<b>Power Unit</b>	Electrical, battery pack 48V Sufficient for 12 working hours
<b>Max Force</b>	400 ton for each expander row
<b>Expanders</b>	2 expander rows Each row has 24 expanders
<b>Slope max.</b>	15%
<b>Radius on bent pipes</b>	40xD
<b>Working environment</b>	Temp -40° / 50°C
<b>Weight</b>	5600kg (model 48" – 56")
<b>Dimension</b>	D1160 x L3600mm (model 48" – 56")
<b>Travel speed</b>	0,1 - 0,4 m/s
<b>Wheels</b>	Ø 310mm polyurethane
<b>Brakes</b>	Polyurethane blocks
<b>Operate</b>	Remote control distance up to 300m
<b>Batterys</b>	Deep-cycle AGM
<b>Optional</b>	Copper shoes for automatic welding
<b>Training</b>	On request for training personnel about operations
<b>Quality / safety</b>	CE
<b>Warranty</b>	12 months
<b>Documentation</b>	Supply User and maintenance manuals; spare part book all documents in English.



Self propelled



Hydraulic gap adjustment



weather-strip, blocks draught from the pipeline